

## On the Moove Activity Bar



**VTech understands that a child's needs and abilities change as they grow and with that in mind we develop our toys to teach and entertain at just the right level...**

## **vtech Baby**

**Toys that will stimulate their interest in different textures, sounds and colours**

### **I am...**

...responding to colours, sounds and textures

...understanding cause and effect

...learning to touch, reach, grasp, sit-up, crawl and toddle

**Birth-36 months**



## **Pre-School**

**Interactive toys to develop their imagination and encourage language development**

### **I want...**

...to get ready for school by starting to learn the alphabet and counting

...my learning to be as fun, easy and exciting as can be

...to show my creativity with drawing and music so my whole brain develops

**3-6 years**



## **Electronic Learning Computers**

**Cool, aspirational and inspiring computers for curriculum related learning**

### **I need...**

...challenging activities that can keep pace with my growing mind

...intelligent technology that adapts to my level of learning

...National Curriculum based content to support what I'm learning at school

**4-10 years**

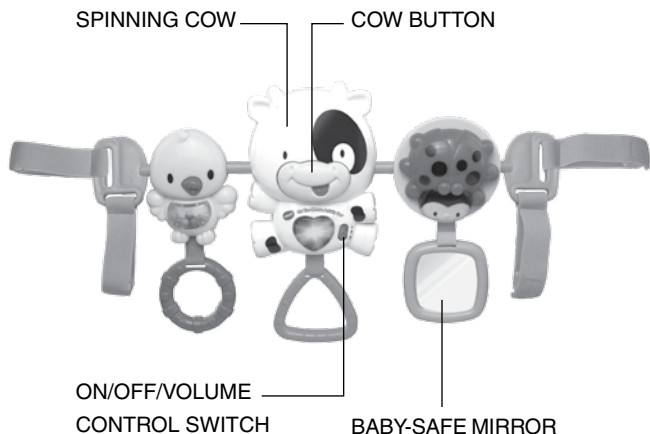


To learn more about this and other VTech® products, visit [www.vtech.co.uk](http://www.vtech.co.uk)

# INTRODUCTION

Thank you for purchasing the **VTech® On the Moove Activity Bar** learning toy.

The **VTech® On the Moove Activity Bar** is a cute farm-themed toy bar for babies on the go. Press the button on the chunky cow character or activate the motion sensor by rocking and spinning the cow to hear a variety of playful responses. The bird comes with a textured ring that is easy for baby to grab and swing, while the ladybird has a baby-safe mirror for peek-a-boo fun!

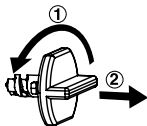


# INCLUDED IN THIS PACKAGE

- One VTech® On the Moove Activity Bar learning toy
- One user's manual

**WARNING:** All packing materials, such as tape, plastic sheets, wire ties and tags are not part of this toy, and should be discarded for your child's safety.

**NOTE:** Please keep this instruction manual as it contains important information.

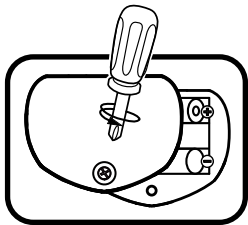


- ① Turn the packaging lock counter-clockwise several times.
- ② Pull out and discard the packaging lock.

## GETTING STARTED

### BATTERY INSTALLATION

1. Make sure the unit is turned **OFF**.
2. Locate the battery cover on the back of the cow. Use a screwdriver to loosen the screw.
3. Install 2 new AAA batteries following the diagram inside the battery box. (The use of new alkaline batteries is recommended for maximum performance.)
4. Replace the battery cover and tighten the screw to secure.



# BATTERY NOTICE

- Use new alkaline batteries for maximum performance.
- Use only batteries of the same or equivalent type as recommended.
- Do not mix different types of batteries: alkaline, standard (carbon-zinc) or rechargeable (Ni-Cd, Ni-MH), or new and used batteries.
- Do not use damaged batteries.
- Insert batteries with the correct polarity.
- Do not short-circuit the battery terminals.
- Remove exhausted batteries from the toy.
- Remove batteries during long periods of non-use.
- Do not dispose of batteries in fire.
- Do not charge non-rechargeable batteries.
- Remove rechargeable batteries from the toy before charging (if removable).
- Rechargeable batteries are only to be charged under adult supervision.

## Disposal of batteries and product



The crossed-out wheellie bin symbols on products and batteries, or on their respective packaging, indicates they must not be disposed of in domestic waste as they contain substances that can be damaging to the environment and human health.



The chemical symbols Hg, Cd or Pb, where marked, indicate that the battery contains more than the specified value of mercury (Hg), cadmium (Cd) or lead (Pb) set out in Battery Directive (2006/66/EC).

The solid bar indicates that the product was placed on the market after 13th August, 2005.

Help protect the environment by disposing of your product or batteries responsibly.

For more information, please visit:

[www.recycle-more.co.uk](http://www.recycle-more.co.uk)

[www.recyclenow.com](http://www.recyclenow.com)

With the **VTech® On the Moove Activity Bar** safety comes first. To ensure your child's safety, adult assembly is required. Never use toy bar as a handle. Do not use in moving vehicles. Do not add additional strings or straps. To prevent possible injury by entanglement, remove this toy when the child begins to push up on hands and knees in a crawling position. Do not let your baby play with the toy until it is properly attached to an infant carrier. Please ensure it is frequently checked by an adult to make sure it is well attached.

## PRODUCT FEATURES

### 1. ON/OFF/VOLUME CONTROL SWITCH

To turn the unit **ON**, slide the **ON/OFF/VOLUME CONTROL SWITCH** to the **LOW VOLUME** (🔊) or the **HIGH VOLUME** (🔊🔊) position. To turn the unit **OFF**, slide the **ON/OFF/VOLUME CONTROL SWITCH** to the **OFF** (●) position.



### 2. INFANT CARRIER ATTACHMENT

To attach the toy bar to an infant carrier, position the toy bar so that the animals are facing baby and are within reach. Secure the two straps around the infant carrier handle. Wrap the elastic straps around the infant carrier handle so the toy bar is attached tightly and securely to the infant carrier handle.

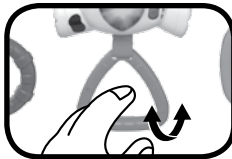
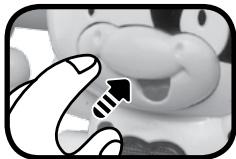


### 3. AUTOMATIC SHUT-OFF

To preserve battery life, the **VTech® On the Moove Activity Bar** will automatically power-down after approximately 45 seconds without input. The unit can be turned on again by pressing any button. Activating the motion sensor will not turn the unit back on.

## ACTIVITIES

1. Slide the **on/off/volume control switch** to turn the unit on. You will hear a playful sound, a song, a fun phrase and a short tune. The light will flash with the sounds.
2. Press the **cow button** to hear fun sounds, playful phrases, songs and playful melodies. When a melody is playing, activate the motion sensor to hear fun sounds play over the melody. The light will flash with the sounds.
3. Swing the cow to activate the motion sensor and hear fun sounds and playful phrases. The light will flash with the sounds.



# MELODY LIST

1. Boys and Girls Go Out to Play
2. Shoo Fly, Don't Bother Me
3. Arkansas Traveller
4. Oh! Susanna
5. Farmer in the Dell
6. Old MacDonald Had a Farm
7. Aiken Drum
8. Toyland
9. Turkey in the Straw
10. Yellow Rose of Texas
11. Buffalo Girls
12. Clementine
13. Chicken Reel
14. Pop! Goes the Weasel
15. Diddle, Diddle, Dumpling
16. Big Rock Candy Mountain
17. Happy Farmer
18. Baa, Baa, Black Sheep
19. Hey Diddle Diddle
20. Goosey Goosey Gander



# SING-ALONG SONG LYRICS

## SONG 1

I'm a little spotted cow, moo, moo, moo!  
I have cute little horns on the top of my head!

## SONG 2

Birdie, birdie, do you like to sing?  
Sitting on your little round ring.

## SONG 3

Peek-a-boo, little ladybird.  
Who do you see in your little mirror?

# CARE & MAINTENANCE

1. Keep the unit clean by wiping it with a slightly damp cloth.
2. Keep the unit out of direct sunlight and away from any direct heat source.
3. Remove the batteries when the unit will not be in use for an extended period of time.
4. Do not drop the unit on hard surfaces and do not expose the unit to moisture or water.

# TROUBLESHOOTING

If for some reason the program/activity stops working or malfunctions, please follow these steps:

1. Please turn the unit **OFF**.
2. Interrupt the power supply by removing the batteries.
3. Let the unit stand for a few minutes, then replace the batteries.
4. Turn the unit **ON**. The unit should now be ready to play again.
5. If the product still does not work, replace with a new set of batteries.

If the problem persists, please call our Consumer Services Department on 01235 546810 (from UK) or +44 1235 546810 (outside UK) and a service representative will be happy to help you.

## IMPORTANT NOTE:

Creating and developing VTech products is accompanied by a responsibility that we take very seriously. We make every effort to ensure the accuracy of the information, which forms the value of our products. However, errors sometimes can occur. It is important for you to know that we stand behind our products and encourage you to call our Consumer Services Department on 01235 546810 (from UK) or +44 1235 546810 (outside UK), with any problems and/or suggestions that you might have. A service representative will be happy to help you.





## PRODUCT WARRANTY



Thank you for choosing this quality product from VTech. We hope it will bring many hours of entertainment, imaginative play and learning.

1. The product detailed above is covered by a one year warranty from the date of purchase, against any defects in materials or workmanship.
2. The product may be returned to the place of purchase. Alternatively the product can be returned to VTech Electronics Europe plc (see address below), with proof of purchase, without proof of purchase no replacement will be provided.
3. VTech Electronics Europe plc will examine the product and if it is found to be defective due to faulty materials or workmanship, will replace the product at their discretion.
4. If the product covered by this warranty is damaged due to misuse, modification or unauthorised repair, or because of faulty batteries, battery discharge or incorrect electrical connections, then this warranty becomes void.
5. This warranty is personal to the original purchaser and is not transferable.
6. Breakages to the LCD screen are not covered by the warranty.
7. Returns to VTech Electronics Europe plc should include a cheque or postal order for £1.50 towards the cost of return postage and packaging.
8. Products returned to VTech Electronics Europe plc, should be addressed as follows and packed carefully to avoid damage in transit (Please do not include batteries or adaptor).  
Please include details of the fault together with your name and address.
9. To keep an online record of your warranty, please register your product online at [www.vtech.co.uk/warranty](http://www.vtech.co.uk/warranty)

VTech Electronics Europe plc, c/o Tablogix Limited, 200 Milton Park, Abingdon, Oxon OX14 4TA

**THIS WARRANTY IS OFFERED AS AN EXTRA BENEFIT AND DOES NOT AFFECT CONSUMERS' STATUTORY RIGHTS.**

**This warranty is valid for the UK and Eire only. For products purchased outside the UK and Eire, please contact your local distributor or place of purchase.**

